

ELECTRE ME: A PROPOSAL OF AN OUTRANKING MODELING IN SITUATIONS WITH SEVERAL EVALUATORS

Helder Gomes Costa

helder.hgc@gmail.com
Fluminense Federal University –
UFF, Niterói, Rio de Janeiro, Brazil

**Livia Dias de Oliveira
Nepomuceno**

oliveirald@yahoo.com.br
Federal Center for Technological
Education Celso Suckow da Fonseca
– CEFET, Rio de Janeiro, Rio de
Janeiro Brazil

Valdecy Pereira

valdecypereira@yahoo.com.br
Fluminense Federal University –
UFF, Niterói, Rio de Janeiro, Brazil

ABSTRACT

Highlights: This paper describes an original proposal for modeling Multicriteria problems taking into account more than one evaluator. It allows each evaluator to have its own set of criteria. It also avoids the incoherency of adopting compensatory techniques into non-compensatory algorithms.

Goal: This paper describes an original proposal for modeling multicriteria situations where multiple evaluators take part of the evaluation process. This proposal allows each evaluator to have its own set of criteria, including their weights, and also avoids the usual inconsistency of adopting pre-processing compensatory methods for introducing it into non-compensatory algorithms.

Design / Methodology / Approach: In order to better describe how ELECTRE ME works, a multicriteria-multiple evaluator situation is modeled by ELECTRE TRI ME (as we have called the ELECTRE TRI variation that incorporates the principles of multiple evaluators).

Results: ELECTRE ME was able to avoid the inconsistency of adopting contradictory mechanisms of aggregating preferences while modeling multicriteria & multiple evaluators problems (first called here as MCDA-ME).

Limitations: Although the proposal focuses in situations with multiple evaluators, there is no restriction for its application in situations where there is only one decision maker.

Practical implications: Another important feature of ELECTRE ME is that it allows each evaluator to consider its own set of criteria and its own scale for evaluation.

Originality / Value: ELECTRE ME avoids a contradictory approach to use compensatory algorithms (such as weighted mean) as an input in non-compensatory outranking methods. Despite the fact that non-compensatory principle is in the heart of the ELECTRE methods, it has not found a previous proposal with the attributes shown in this study: to incorporate outranking concepts in situations where more than one evaluator is present and, by extension, allow each evaluator to have its own set of criteria.

Keywords: Decision Analysis; Multiple Criteria; Multicriteria; MCDA; MCDM.



1. INTRODUCTION

While dealing with group decision or evaluation situations in which the opinions or perceptions of several or multiple evaluators appears, there are two main streams and basic approaches: the consensus and the voting systems. The consensus is reached through dialogue and, as reported in Sobral and Costa (2012), the first approach can produce good solutions, once it usually incites discussions and induces a better comprehension about the problem. Unfortunately, the dialogue and interactive-discussion-based approaches are limited to a small number of evaluators.

On the other hand, are the voting systems, designed for situations where there is no way to adopt a consensus through a dialogue approach, such as when there is a great number of evaluators, which makes the use of consensus approaches based on dialogue unaffordable. In this second type of situation, there is an attempt to apply a voting system and consolidate the different evaluations in an overall number that should be an approximation of the consensus among the evaluations as a whole. There are several models that apply more refined techniques to reach such overall number, as a sample cited in: Nordström et al. (2009), Yu and Lai (2011), Leyva López and Alvarez Carrillo (2015), Pereira and Costa (2015), Sant'Anna et al. (2016), Ding et al. (2017), Zeng et al. (2018) and Wu and Liao (2019). Despite this fact, in the voting systems, it is still usual to apply a weight sum algorithm for aggregating the preferences.

Following another stream, there are situations with unitary evaluations (evaluations made by only one evaluator or a group of evaluators whose opinions are expressed by a unique number or evaluation). For such situations, Roy (1968a) proposed the outranking approach, that is in the basis of ELECTRE (ELimination Et Choix Traidusaint la REalité) family of MCDA (Multicriteria Decision Aid) methods. If the seminal references that appear in Table 1 are analyzed, it could be concluded that ELECTRE methods were proposed for situations with unitary evaluations. As reported in Roy (1968a), such outranking procedure is so-called a non-compensatory method, once it focuses on eliminating the compensatory undesirable effects that appear in algorithms usually adopted for aggregating the Decision Maker (DM) evaluations, such as the weighted means. Compensatory effects also appear in other Multicriteria methods, such as Topsis (Hwang et al., 1993) and AHP (Saaty and Vargas, 2006). Despite the outranking appeal of ELECTRE methods, when dealing with opinions or evaluations that come from different evaluators, the ELECTRE-based models usually adopt a compensatory approach in order to get an overall number from aggregating individual preferences and introduce such number as an input to the non-compensatory outranking ELECTRE procedure, as it occurs in Galo et al. (2018), Kamali et al. (2018), Sant'Anna et al. (2016) and Nepomuceno and

Costa (2015), among others. The main problem observed in this last approach is that the determination of this overall number is generally based in a compensatory aggregation method, which is not in agreement with the non-compensatory principles of ELECTRE method.

The main question that arises from this problem is: How to deal with the opinions from different evaluators when there is no way to find out consensus? This paper aims to describe an original and simple variation on the usual ELECTRE methods, to deal simultaneously with both multicriteria and multiple decision maker situations, and that also incorporates the non-compensatory and non-dominance principles of ELECTRE while dealing with multiple decision makers evaluations.

2. BACKGROUND: THE FUNDAMENTALS OF ELECTRE

Roy (1968a) proposed the ELECTRE method, that is based on non-compensatory outranking principles. Costa et al. (2007) established an analogy with a volleyball game in order to provide a more comprehensive explanation about the main differences between a compensatory approach (such as the weight sum) and a non-compensatory outranking approach. Thus, in order to well-establish the difference between a compensatory and a non-compensatory approach, it should be considered an analogy with a volleyball match, in which team A wins team B by 25 to 5 in the first set, but loses all the three following sets to team B by 25 to 20. In this situation, one could then imagine the following procedures to identify the winner of the match:

- a) A compensatory approach: Uses the sum of the points gained by the team in each set. In this case, A would be the winner by 85x80 points.
- b) A non-compensatory approach: Uses the number of game sets that each team wins. In this case, team B would be the winner by 3x1 sets. This procedure, which is actually adopted in volleyball matches, could be classified as an outranking approach.

The main outranking principle is very similar to the second procedure described above, if each game set is considered as a criterion.

Since the first appearance of ELECTRE in Roy (1968a) a large variety of MCDA methods have followed the non-compensatory outranking principles that are in the core of ELECTRE - Table 1 shows some of these variations. As it can be seen, ELECTRE TRI (Mousseau et al., 2000) and its variants ELECTRE TRI-C (Almeida-Dias et al., 2010) and TRI-nC (Almeida-Dias et al., 2012) are the latest members of the ELECTRE Family of MCDA methods.

It is interesting to notice that ELECTRE II, III, and IV are classified as ranking methods because they first and foremost build a rank, even though they are usually adopted to solve choice problems.

Table 1. The ELECTRE methods

Method	Reference	Problematic
ELECTRE I	Roy, 1968b	Choice
ELECTRE II	Roy and Bertier, 1971	Ranking
ELECTRE III	Roy, 1978	Ranking
ELECTRE IV	Roy and Hugonnard, 1981	Ranking
ELECTRE IS	Roy and Skalka, 1985	Choice
ELECTRE TRI	Yu, 1992 and Mousseau et al., 2000	Sorting
ELECTRE TRI-C	Almeida-Dias et al., 2010	Sorting
ELECTRE TRI-nC	Almeida-Dias et al., 2012	Sorting

Source: Nepomuceno and Costa, 2015

3. THE PROPOSAL: ELECTRE ME

The proposal reported in this paper was designated as ELECTRE ME (ELECTRE Multi Evaluators), in order to distinguish it from previous ELECTRE methods. The following assumptions were made in ELECTRE ME:

- Alternatives
 - $\mathbf{A} = \{a_1, a_2, \dots, a_r, \dots, a_m\}$ is a set composed by m alternatives.
- Evaluators
 - $\mathbf{E} = \{e_1, e_2, \dots, e_j, \dots, e_n\}$ is a set of n evaluators.
- Criteria
 - $\mathbf{Fe}_1 = \{k_{1e1}, k_{2e1}, \dots, k_{ve1}\}$ is the subset composed by the v criteria adopted by the evaluator e_1 .
 - $\mathbf{Fe}_2 = \{k_{1e2}, k_{2e2}, \dots, k_{xe2}\}$ is the subset composed by the x criteria adopted by the evaluator e_2 .
 - $\mathbf{Fe}_j = \{k_{1ej}, k_{2ej}, \dots, k_{yej}\}$ is the subset composed by the y criteria adopted by the evaluator e_j .
 - $\mathbf{Fe}_n = \{k_{1en}, k_{2en}, \dots, k_{zen}\}$ is the subset composed by the z criteria adopted by the evaluator e_n .
- Weight of the criteria
 - $\mathbf{We}_1 = \{w_{1e1}, w_{2e1}, \dots, w_{ve1}\}$ is the subset composed by the weights of the v criteria under the per-

spective of the evaluator e_1 . So that, in this vector, w_{2e1} means the weight of criterion 2, under the opinion of evaluator e_1 .

- $\mathbf{We}_2 = \{w_{1e2}, w_{2e2}, \dots, w_{xe2}\}$ is the subset composed by the weights of the x criteria under the perspective of the evaluator e_2 .
- $\mathbf{We}_j = \{w_{1ej}, w_{2ej}, \dots, w_{yej}\}$ is the subset composed by the weights of the y criteria under the perspective of the evaluator e_j .
- $\mathbf{We}_n = \{w_{1en}, w_{2en}, \dots, w_{zen}\}$ is the subset composed by the weights of the z criteria under the perspective of the evaluator e_n .
- Performance of the alternatives
 - $\mathbf{Ge}_1(a_i) = \{g_{1e1}(a_i), g_{2e1}(a_i), \dots, g_{ve1}(a_i)\}$ is the subset composed by the performance of alternative a_i under the perspective of the evaluator e_1 and the set of v criteria adopted by this evaluator. So that, in this vector, $g_{2e1}(a_i)$ means the performance of alternative a_i under criterion 2, under the viewpoint of the evaluator e_1 .
 - $\mathbf{Ge}_2(a_i) = \{g_{1e2}(a_i), g_{2e2}(a_i), \dots, g_{xe2}(a_i)\}$ is the subset composed by the performance of alternative a_i under the perspective of the evaluator e_1 and the set of y criteria adopted by the evaluator e_2 .
 - $\mathbf{Ge}_j(a_i) = \{g_{1ej}(a_i), g_{2ej}(a_i), \dots, g_{yej}(a_i)\}$ is the subset composed by the performance of alternative a_i under the perspective of the evaluator e_1 and the set of y criteria adopted by the evaluator e_j .
 - $\mathbf{Ge}_n(a_i) = \{g_{1en}(a_i), g_{2en}(a_i), \dots, g_{zen}(a_i)\}$ is the subset composed by the performance of alternative a_i under the perspective of the evaluator e_1 and the set of z criteria adopted by the evaluator e_n .

The present proposal differs from the previous ELECTRE-based approaches in two ways:

- It allows each evaluator to have its own set of criteria, and its own scales for the evaluation of criteria weights and even alternative performances.
- It makes use of a non-compensatory approach to deal with the individual preferences of the evaluators.

To do this, it makes a unique and simple assumption: it assumes the whole criteria set (\mathbf{E}) of overall criteria as the **union** of every subset from each evaluator. So that:



$$F = Fe_1 \cup Fe_2 \cup \dots \cup Fe_j \cup \dots \cup Fe_{n-1} \cup Fe_n \quad [\text{eq. 1}]$$

where

- Fe_1 is the subset of criteria adopted by evaluator e_1
- Fe_2 is the subset of criteria that evaluator e_2 considers relevant
- ...
- ...
- Fe_n is the subset of criteria that evaluator e_n takes into account.

In other words:

$$F = \{\{k_{1e1}, k_{2e1}, \dots, k_{ve1}\}, \{k_{1e2}, k_{2e2}, \dots, k_{xe2}\}, \dots, \{k_{1ej}, k_{2ej}, \dots, k_{yej}\}, \dots, \{k_{1en}, k_{2en}, \dots, k_{zen}\}\}$$

As a consequence of this assumption, it follows that:

$$W = We_1 \cup We_2 \cup \dots \cup We_j \cup \dots \cup We_{n-1} \cup We_n \quad [\text{eq. 2}]$$

Or

$$W = \{\{w_{1e1}, w_{2e1}, \dots, w_{ve1}\}, \{w_{1e2}, w_{2e2}, \dots, w_{xe2}\}, \dots, \{w_{1ej}, w_{2ej}, \dots, w_{yej}\}, \dots, \{w_{1en}, w_{2en}, \dots, w_{zen}\}\}$$

where W is the overall vector of criteria weights.

$$G(a) = Ge_1(a) \cup Ge_2(a) \cup \dots \cup Ge_j(a) \cup \dots \cup Ge_{n-1}(a) \cup Ge_n(a) \quad [\text{eq. 3}]$$

or

$$G(a) = \{\{g_{1e1}(a), g_{2e1}(a), \dots, g_{ve1}(a)\}, \{g_{1e2}(a), g_{2e2}(a), \dots, g_{xe2}(a)\}, \dots, \{g_{1ej}(a), g_{2ej}(a), \dots, g_{yej}(a)\}, \dots, \{g_{1en}(a), g_{2en}(a), \dots, g_{zen}(a)\}\}$$

where $G(a)$ is the overall performance of a generic alternative $a \in A$.

After these assumptions, an ELECTRE ME-based model plays in the same way the previous ELECTRE models do.

4. THE ELECTRE TRI ME

Without losing generality, from this point, the focus is shifted to describing ELECTRE TRI ME: an outranking sorting method that adds the ME principles to ELECTRE TRI (Yu,

1992; Mousseau et al., 2000). The ELECTRE TRI ME was chosen as a background to show the ME adaptation of ELECTRE methods, since ELECTRE TRI-based methods are the most recent variations of ELECTRE non-compensatory method (as shown in Table 1). Therefore, the authors highlight that this decision does not result in any loss of generality and that the reasoning proposed in this study, by extension, could be applied to all the other ELECTRE methods. Next sections focus on presenting a short introduction to ELECTRE TRI, followed by an insertion about ELECTRE TRI ME and two numerical samples.

4.1 A briefing on the ELECTRE TRI

As reported in Mousseau et al. (2000) and shown in Figure 1, ELECTRE TRI sorts an alternative into a category from a set C of categories. These categories are delimited by a set of profiles or borders B , which are defined for each criterion, as it can be seen in Figure 2. The categories are ranked from the worst (C_1) to the best (C_{p+1}). Observe that a generic profile b_h is both the superior limit of C_h , and the inferior limit of C_{h+1} .

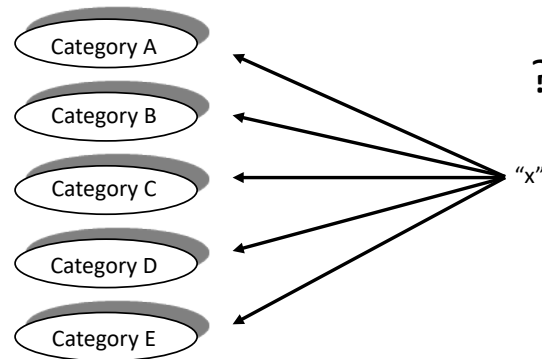


Figure 1. The sorting problem

Source: Nepomuceno and Costa, 2015

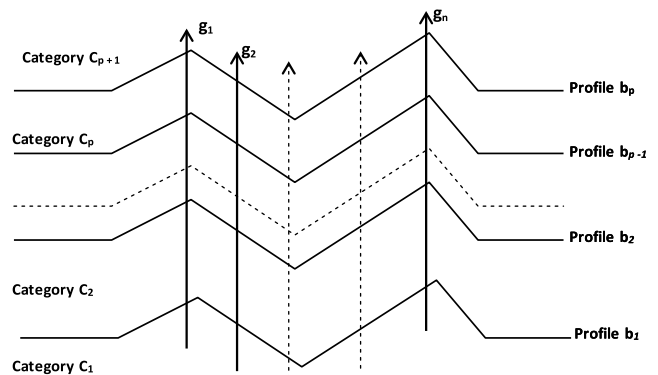


Figure 2. Categories of the ELECTRE TRI

Source: Nepomuceno and Costa, 2015

The following two steps are played when running ELECTRE TRI for sorting the alternatives on the categories:

- To build outranking relationship S , among the alternatives to be sorted and the profiles or boundaries of the categories.
- To exploit the relation S in order to assign each alternative to a category.

The statement aSb_h means that “alternative a does not have performance worse than the profile b_h ”. In the validation of this statement aSb_h , a credibility degree $\sigma(a, b_h)$ is calculated, so that it expresses that the confidence with the statement “ a is not worse than b_h ” is calculated. To define the outranking relation, a credibility cut-plane λ , is adopted. So that:

$$aSb_h \leftrightarrow \sigma(a, b_h) \geq \lambda$$

The credibility degree $\sigma(a, b_h)$ is calculated as it follows:

$$\sigma(a, b_h) = c(a, b_h) \prod_{j \in Fc} [(1 - d_j(a, b_h)) / (1 - c(a, b_h))] \quad [\text{Eq. 1}]$$

Where

$$Fc = \{j \in F / d_j(a, b_h) > c(a, b_h)\}$$

$$c_j(a, b_h) = [\sum_{j \in Fc} w_j c_j(a, b_h)] / \sum_{j \in Fc} k_j$$

$$c_j(a, b_h) = \begin{cases} 0, & \text{If } g_j(a) \leq g_j(b_h) - p_j(b_h) \\ 1, & \text{If } g_j(b_h) - q_j(b_h) < g_j(a) \\ \frac{g_j(a) - g_j(b_h) + p_j(b_h)}{[p_j(b_h) - q_j(b_h)]}, & \text{if } g_j(b_h) - p_j(b_h) < g_j(a) \leq g_j(b_h) - q_j(b_h) \end{cases}$$

$$d_j(a, b_h) = \begin{cases} 0, & \text{If } g_j(a) > g_j(b_h) - p_j(b_h) \\ 1, & \text{If } g_j(b_h) - v_j(b_h) \geq g_j(a) \\ \frac{g_j(b_h) - g_j(a) - p_j(b_h)}{[v_j(b_h) - p_j(b_h)]}, & \text{if } g_j(b_h) - v_j(b_h) < g_j(a) \leq g_j(b_h) - p_j(b_h) \end{cases}$$

In these equations:

- $c_j(a, b_h)$ expresses the concordance degree with the statement “ a is not worse than b_h under the criterion g_j ”
- $d_j(a, b_h)$ expresses the discordance degree with the statement “ a is not worse than b_h under the criterion g_j ”
- q, p and v express, respectively, the indifference, preference, and veto thresholds.

To assign an alternative to a category, the ELECTRE TRI method defines two sorting procedures:

- The pessimistic (or more exigent) sorting procedure, described as follows:
 - Compare a successively with b_j , for $j = p; p - 1, \dots, 1$.
 - Consider b_h as the first profile limit so that aSb_h , and classify a into class C_{h+1} (denoted by $a \in C_{h+1}$).
 - If there is no one profile b_j such that aSb_j , then a is classified into the lowest class: Class C_1 .
- The optimistic sorting procedure (or disjunctive) is described as follows:
 - Compare $b_j, j = 1; 2, \dots, p$ successively with a .
 - Consider b_j as the first profile such that $b_j > a$, and classify a into class C_h (denoted by $a \in C_h$).
 - If there is no one profile b_j such that $b_j Sa$, then a is classified into the highest class: Class C_{p+1} .

4.2 Adding ME principles into ELECTRE TRI: the ELECTRE TRI ME

Thus, in ELECTRE TRI ME it is necessary to add two new assumptions to those previously shown:

- $C = \{C_1, C_2, \dots, C_h, \dots, C_{p+1}\}$ is the set of p categories that are ranked from the worst (C_1) to the best (C_{p+1}).
- $B_{kej} = \{b_{1kej}, b_{2kej}, \dots, b_{hkej}, \dots, b_{pkej}\}$ is a set composed by p profiles or boundaries that delimit the categories for a criterion k , under the view point of an evaluator e_j . As the categories are adjacent, b_h is both the superior limit of C_h , and the inferior limit of C_{h+1} .

In a more general way, taking into account that there should exist n evaluators:

$$B = Be_1 \cup Be_2 \cup \dots \cup Be_j \cup \dots \cup Be_{n-1} \cup Be_n \quad [\text{eq. 2}]$$

Or

$$B = \{\{b_{11e1}, b_{21e1}, \dots, b_{p1e1}\}, \{b_{12e1}, b_{22e1}, \dots, b_{p2e1}\}, \{b_{1ve1}, b_{2ve1}, \dots, b_{pve1}\}, \{b_{11e2}, b_{21e2}, \dots, b_{p1e2}\}, \{b_{12e2}, b_{22e2}, \dots, b_{p2e2}\}, \{b_{1ve2}, b_{2ve2}, \dots, b_{pve2}\}\}$$



$$\{b_{11ej}, b_{21ej}, \dots, b_{p1ej}\}, \{b_{12ej}, b_{22ej}, \dots, b_{p2ej}\}, \{b_{1vej}, b_{2vej}, \dots, b_{pvej}\},$$

$$\{b_{11en}, b_{21en}, \dots, b_{p1en}\}, \{b_{12en}, b_{22en}, \dots, b_{p2en}\}, \{b_{1ven}, b_{2ven}, \dots, b_{pven}\},$$

where **B** is the overall vector of profiles, and *p* is the number of profiles.

After these assumptions, ELECTRE TRI ME performs in the same way that ELECTRE TRI does.

4.3 Numerical example 1: a complete sample of applying ELECTRE TRI ME

Now take into account a situation where a meal X had its performance evaluated by three evaluators (E1, E2 and E3), in order that X could be assigned to one category of performance. Table 2 summarizes the data of this numerical sample, which is commented as follows:

- The set **A** of alternatives is unitary, that is, it has only one alternative: X.
- The set of categories comprehends five possibilities: Very good, Good, Middle, Poor, and Very poor. So that: **C** = {VG; G; M; P; VP}
- Each evaluator has its own criteria set and criteria weights, so that:
 - $F_{e1} = \{\text{Appeal; Taste}\}$
 - $W_{e1} = \{4; 6\}$
 - $F_{e2} = \{\text{Taste; Proteins; Vitamins}\}$
 - $W_{e2} = \{2; 4; 4\}$
 - $F_{e3} = \{\text{Aroma}\}$
 - $W_{e3} = \{10\}$

Table 2. Summary of the data for the numerical example 1

	Evaluator E1		Evaluator E2			Evaluator E3
	Appeal	Taste	Taste	Proteins	Vitamins	Aroma
Criterion Weight	4	6	2	4	4	10
Performance of X	8	6	8	7	7	6
Boundary b4	2	4	2	4	4	6
Boundary b3	4	6	6	6	6	7
Boundary b2	6	8	8	8	8	8
Boundary b1	8	9	9	9	9	9

Each evaluator has its own perception about the performance of X under its own criteria set.

- $G_{e1}(x) = \{8.5; 6.8\}$
- $G_{e2}(x) = \{8.3; 8.3; 9.7\}$
- $G_{e3}(x) = \{8.4\}$

Each evaluator should have its own perception about the boundaries of each class in **C**. So that:

- $B_{\text{Appeal } e1} = \{2; 4; 6; 8\}$
- $B_{\text{Taste } e1} = \{4; 6; 8; 9\}$
- $B_{\text{Taste } e2} = \{2; 6; 8; 9\}$
- $B_{\text{Proteins } e2} = \{4; 6; 8; 9\}$
- $B_{\text{Vitamins } e2} = \{4; 6; 8; 9\}$
- $B_{\text{Aroma } e3} = \{6; 7; 8; 9\}$

An extensive search on Scopus data base, looking for previous works in MCDA fields was performed and it was not found in the literature a previous MCDA-based model with more than one evaluator in which each evaluator uses its own set of criteria and its own scale while evaluating the performance of alternatives. In the scope of ELECTRE TRI-based models, the fact that each evaluator uses its own set of profiles in order to define the limits of the categories in C is also unheard. Although in some decision situations it should be necessary to standardize these parameters, there are some situations in which it is interesting that the evaluators have independence while establishing such parameters, as when catching the costumers' perceptions regarding the quality of a service.

As shown in figure 3, comparing the evaluations in $G(x)$ vector with the profiles in B , it is possible to conclude that:

- E1 classifies the meal X into the category Very Good, while analyzing X's appeal, and classify X as Middle while evaluating it under the Taste criterion.
- E2 classifies X as Good under the criteria Vitamins and in the category Very Good under the Taste viewpoint.
- X is classified as Poor by evaluator E3 that has taken into account only one criterion: Aroma.

		Evaluator E1		Evaluator E2			Evaluat- tor E3
		Appeal weight = 6	Taste weight = 8	Taste weight = 4	Pro- teins weight = 6	Vita- mins weight = 6	Aroma weight = 10
Category	VG	X				X	
	G			X	X		X
	M		X				
	P						
	VP						

Figure 3. Performance of X under the criteria set and an ELECTRE TRI ME perspective.

From this point, we assume the thresholds $p = q = 0$, and no veto restriction. This assumption does not imply in any restriction or loss of generality to the description of ELECTRE TRI ME whatsoever.

The meal X is at least Very Good in two criteria (Appeal for evaluator E1 and Vitamins for E2), whose weights sum 12. Since 40 is the sum of all the weights in the vector W , the credibility degree in which X is at least Very Good is equal to $12/40$; e.g. $\sigma(X, VG) = 0.3$.

Applying analog reasoning, it results in X being at least Good in five criteria (Appeal for E1; Taste, Protein, and Vitamins for E2; and, Aroma for E3), whose weights sum 32. Thus, the credibility degree in which X is at least Good is equal to $32/40$; e.g. $\sigma(X, G) = 32/40 = 0.8$. It also results in $\sigma(X, M) = \sigma(X, P) = \sigma(X, VP) = 40/40 = 1.0$.

Therefore, adopting a cutting plane sequal to 1.0, the meal X is classified into category Middle. However, if one wishes to adopt a less exigent cutting plane, such as $\sigma = 0.8$, X would be classified as Good, since $\sigma(X, G) = 0.8 \geq \sigma$.

4.4 Numerical example 2: comparing the results from ELECTRE TRI and ELECTRE TRI ME

Now, let us take into account another data set that refers to a situation where three evaluators (E1, E2 and E3) consider the same set of three criteria (C1, C2 and C3). Table 3 shows the performance of a generic alternative Y, and also the criteria importance, under the viewpoint of the evaluators. The data in Table 3 show that all the three evaluators (E1, E2 and E3) have assigned a weight equal to 1.00 to all the criteria, and they show that evaluators E1 and E2 agree that the performance of the alternative Y is equal to 2.50, in all the criteria. In order to simplify the explanation and without loss of generality, it was assumed that, for all criteria and all categories, $p=q=0$, and also the veto threshold was not taken into account.

Table 3. Weight of the criteria and performance of the alternative Y

Evaluat- tor	Performance of Y			Weight of the criteria		
	g1	g2	g3	w1	w2	w3
E1	2.50	2.50	2.50	1.00	1.00	1.00
E2	2.50	2.50	2.50	1.00	1.00	1.00
E3	1.50	1.50	1.50	1.00	1.00	1.00

In this example, three categories are considered: C_A , C_B , and C_C , where C_A is better than C_B that is better than C_C . Table 4 shows the profiles that are the border of these categories. For simplicity and without loss of generality, in this example it was considered that the boundaries of the categories are the same for all the criteria.

Table 4. Boundaries of the classes

Category	Inferior boundary	Superior boundary
CA	2.00	$+\infty$
CB	1.00	2.00
CC	$-\infty$	1.00

So:

- $C = \{C_A, C_B, C_C\}$
- $B = \{1.00; 2.00\}$, for any criterion.

In other words:

$$B = \{\{1.00; 2.00\}, \{1.00; 2.00\}, \{1.00; 2.00\}, \{1.00; 2.00\}, \{1.00; 2.00\}, \{1.00; 2.00\}, \{1.00; 2.00\}\}$$



Figure 4 shows an overview of the data: the performance of the alternatives in each criterion and the categories and their boundaries.

	Performance of Y								
	Evaluator E1			Evaluator E2			Evaluator E3		
	g_{1e1}	g_{2e1}	g_{3e1}	g_{1e2}	g_{2e2}	g_{3e3}	g_{1e3}	g_{2e3}	g_{3e3}
Category C_A $b2 = 2.0$	Y	Y	Y	Y	Y	Y			
Category C_B $b1 = 1.0$							Y	Y	Y
Category C_C									

Figure 4. Performance of an alternative under the criteria set and each evaluator’s view point.

4.4.1 Applying the traditional ELECTRE TRI

In situations where there is more than one evaluation for each criterion, it is usual to assume that, for each criterion, the mean from all evaluations could represent the evaluations of all evaluators, as a whole, so that, for example, the performance of the alternative Y should be represented by the following vector:

$$G(Y) = \{2.17; 2.17; 2.17\}$$

These values in vector G(Y) were calculated as the mean of the evaluations that come from of the three evaluators, for each criterion (C1, C2 and C3). This vector means that Y has the median of its performance equal to 2,17 in the three criteria, taking into account the perceptions of the three evaluators.

Thus, if one uses this mean as the evaluation of alternative Y, there is a credibility degree equal to 1.0 that Y outranks the floor of category C_A ; e.g. $\sigma(YSC_A) = 1.00$. Therefore, ELECTRE TRI would classify Y into category C_A without hesitation or doubt, by using the mean as the value to match the performance of the alternative.

4.4.2 Applying the ELECTRE TRI ME

On the other hand, while applying ELECTRE TRI ME, it is not necessary to aggregate the evaluations into a unique number that represents the evaluators’ opinions as a whole. Table 5 shows the performance of the alternatives.

Table 5. Performance of the alternatives

	Evaluator E1			Evaluator E2			Evaluator E3		
	g_{1e1}	g_{2e1}	g_{3e1}	g_{1e2}	g_{2e2}	g_{3e3}	g_{1e3}	g_{2e3}	g_{3e3}
Performance of Y	2.50	2.50	2.50	2.50	2.50	2.50	1.50	1.50	1.50

Applying equation 3 to these data, one can obtain: $G(Y) = \{2.50; 2.50; 2.50; 2.50; 2.50; 2.50; 1.50; 1.50; 1.50\}$. Thus, the result from computing the credibility index is: $\sigma(YSC_A) = 7/9 = 0.78$ and $\sigma(YSC_B) = 1.00$. Therefore, by maintaining the same credibility cut-level adopted in the previous ELECTRE TRI modeling ($\lambda=1.00$), Y would be classified into category C_B .

4.4.3 Comparing the results

As one can see, the results shown in section 4.2 differ from those in section 4.3. This is because in section 4.3 the use of the mean as a representation of the evaluations from the overall evaluators introduces a compensatory effect, which does not agree with the non-compensatory outranking principles that are in the basis of all the ELECTRE TRI methods. On the other hand, the results in section 4.4, generated by the ELECTRE TRI ME, preserve the outranking principle of ELECTRE methods, since it does not adopt a compensatory way to deal with the evaluations that come from different evaluators.

5. CONCLUSION

This paper has described the ELECTRE ME, an original variation of the ELECTRE methods. This method is able to incorporate the non-compensatory principles of ELECTRE while dealing with both multicriteria and multiple decision makers’ evaluations.

The two main contributions of this approach are:

- It allows each evaluator to have its own criteria set and also its own evaluation scale. Thus, it solves a relevant issue, performing the categorization even if the evaluators have different perceptions in terms of the composition of the criteria set.
- It allows each evaluator to have its own evaluation scale for the evaluation of the alternatives. Thus, it reduces the problem complexity once it avoids the need to develop a sole scale that should be understandable for each of the evaluators.

- It avoids the usage of compensatory procedure, such as the arithmetical mean, to generate inputs for a non-compensatory algorithm, as one of the previous ELECTRE methods.

Despite the simplification assumptions made while building the examples, the comparison of the application of ELECTRE TRI and ELECTRE TRI ME to the same problem has shown relevant differences in the results. These differences were caused by compensatory effects while adopting the arithmetical mean for generating the inputs to ELECTRE TRI. The adoption of ELECTRE TRI ME has avoided such undesirable effects.

Even though the examples are based on ELECTRE TRI ME, the ELECTRE ME proposal is general and can be extended to the ELECTRE family of methods as a whole. As a matter of fact, it should be extended to all multicriteria methods that are based on a table-grid, such as the Promethee family of methods.

REFERENCES

- Almeida-Dias, J.; Figueira, J. R.; Roy, B. (2010), "Electre Tri-C: A multiple criteria sorting method based on characteristic reference actions", *European Journal of Operational Research*, Vol. 204, No. 3, pp. 565-580.
- Almeida-Dias, J.; Figueira, J. R.; Roy, B. (2012), "A multiple criteria sorting method where each category is characterized by several reference actions: The Electre Tri-nC method", *European Journal of Operational Research*, Vol. 217, No. 3, pp. 567-579.
- Costa, H. G.; Mansur, A. F. U.; Freitas, A. L. P. et al. (2007), "ELECTRE TRI aplicado a avaliação da satisfação de consumidores", *Production*, Vol. 17, No. 2, pp. 230-245.
- Ding, J.; Xu, Z. S.; Liao, H. C. (2017), "Consensus-reaching methods for hesitant fuzzy multiple criteria group decision making with hesitant fuzzy decision making matrices", *Frontiers of Information Technology and Electronic Engineering*, Vol. 18, No. 11, pp. 1679-1692.
- Galo, N. R.; Calache, L. D. D. R.; Carpinetti, L. C. R. (2018), "A group decision approach for supplier categorization based on hesitant fuzzy and ELECTRE TRI", *International Journal of Production Economics*, Vol. 202(C), pp. 182-196.
- Hwang, C.-L.; Lai, Y.-J.; Liu, T.-Y. (1993), "A new approach for multiple objective decision making", *Computers & Operations Research*, Vol. 20, No. 8, pp. 889-899.
- Kamali, M.; Hewage, K.; Milani, A. S. (2018), "Life cycle sustainability performance assessment framework for residential modular buildings: Aggregated sustainability indices", *Building and Environment*, Vol. 138, No. 15, pp. 21-41.
- Leyva López, J. C.; Alvarez Carrillo, P. A. (2015), "Accentuating the rank positions in an agreement index with reference to a consensus order", *International Transactions in Operational Research*, Vol. 22, No. 6, pp. 969-995.
- Mousseau, V.; Slowinski, R.; Zielniewicz, P. (2000), "A user-oriented implementation of the ELECTRE-TRI method integrating preference elicitation support", *Computers & Operations Research*, Vol. 27, No. 7-8, pp. 757-777.
- Nepomuceno, L. D. O.; Costa, H. G. (2015), "Analyzing perceptions about the influence of a master course over the professional skills of its alumni: A multicriteria approach", *Pesquisa Operacional*, Vol. 35, No. 1, pp. 187-211.
- Nordström, E. M.; Romero, C.; Eriksson, L. O. et al. (2009), "Aggregation of preferences in participatory forest planning with multiple criteria: An application to the urban forest in Lycksele, Sweden", *Canadian Journal of Forest Research*, Vol. 39, No. 10, pp. 1979-1992.
- Pereira, V.; Costa, H. G. (2015), "Nonlinear programming applied to the reduction of inconsistency in the AHP method", *Annals of Operations Research*, Vol. 229, No. 1, pp. 635-655.
- Roy, B. (1968a), "Classement et choix en presence de points de vue multiples (la methode ELECTRE)", *Recherche Opérationnelle*, Vol. 2, pp. 57-75.
- ROY, B. (1968b), "Classement et choix en présence de points de vue multiples (la méthode ELECTRE)", *Lausanne Presses Polytechniques et Universitaires Romandes*.
- Roy, B. (1978), "ELECTRE III: Un algorithme de méthode de classements fonde sur une representation floue des préférences em présence de critères multiples", *Cahieres de CERO*, Vol. 20, pp. 3-24.
- Roy, B.; Bertier, P. M. (1971), *La méthode ELECTRE II: Une méthode de classement en présence de critères multiples*, SEMA (Metra International), Paris.
- Roy, B.; Hugonnard, J. C. (1981), *Classement des prolongements de lignes de stations en banlieu parisienne*, Université Dauphine et RATP, Paris.
- Roy, B.; Skalka, J. M. (1985), *ELECTRE IS: Aspécts methodologiques et guide d'utilisation*, Cahier du LAMSADE, Université de Paris-Dauphine, Paris.
- Saaty, T. L.; Vargas, L. G. (2006), *Decision making with the analytic network process: economic, political, social and technological applications with benefits, opportunities, costs and risks*, New York, Springer.
- Sant'anna, A. P.; Costa, H. G.; Nepomuceno, L. D. O. et al. (2016), "A probabilistic approach applied to the classification of courses by multiple evaluators", *Pesquisa Operacional*, Vol. 36, pp. 469-485.



Sobral, M. F. F.; Costa, A. P. C. S. (2012), "Negotiation model for group decision with ELECTRE TRI - The ELECTRE TRI-NG", *Journal of Decision Systems*, Vol. 21, pp. 121-136.

Wu, X.; Liao, H. (2019), "A consensus-based probabilistic linguistic gained and lost dominance score method", *European Journal of Operational Research*, Vol. 272, pp. 1017-1027.

Yu, L.; Lai, K. K. (2011), "A distance-based group decision-making methodology for multi-person multi-criteria emergency decision support", *Decision Support Systems*, Vol. 51, pp. 307-315.

Yu, W. (1992), *ELECTRE TRI - Aspects methodologiques et guide d'utilisation*. Document du LAMSADE, Université de Paris-Dauphine, Paris.

Zeng, W.; Li, D.; Yin, Q. (2018), "Distance and similarity measures of Pythagorean fuzzy sets and their applications to multiple criteria group decision making", *International Journal of Intelligent Systems*, Vol. 33, pp. 2236-2254.

ACKNOWLEDGMENTS

This study was financed in part by the *Coordenação de Aperfeiçoamento de Pessoal de Nível Superior - Brasil (CAPES)*- Finance Code 001, and also by *Conselho Nacional de Desenvolvimento Científico e Tecnológico - Brasil (CNPq)* – grant: 312228/2015-5. The authors also thank the Editorial Team of the BJO&PM.

Received: 26 Aug 2018

Approved: 15 Oct 2018

DOI: 10.14488/BJOPM.2018.v15.n4.a10

How to cite: Costa, H. G.; Nepomuceno, L. D. O.; Pereira, V. (2018), "ELECTRE ME: a proposal of an outranking modeling in situations with several evaluators", *Brazilian Journal of Operations & Production Management*, Vol. 15, No. 4, pp. 566-575, available from: <https://bjopm.emnuvens.com.br/bjopm/article/view/553> (access year month day).